

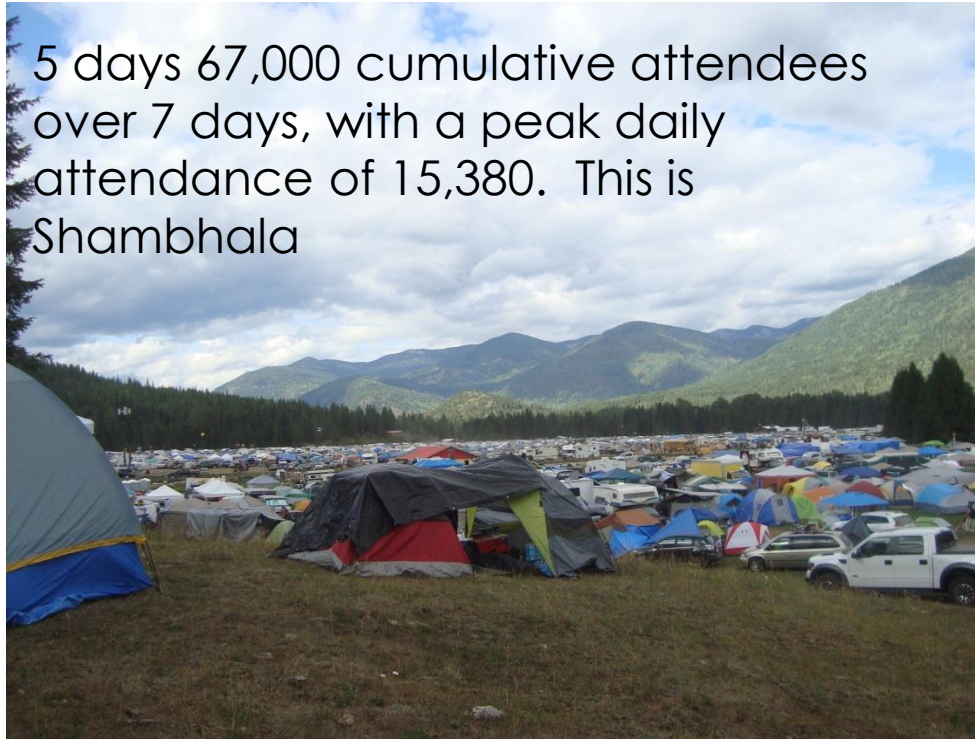
ANKORS Drug Checking at Shambhala Music Festival. 15 years and counting

By Chloe Sage



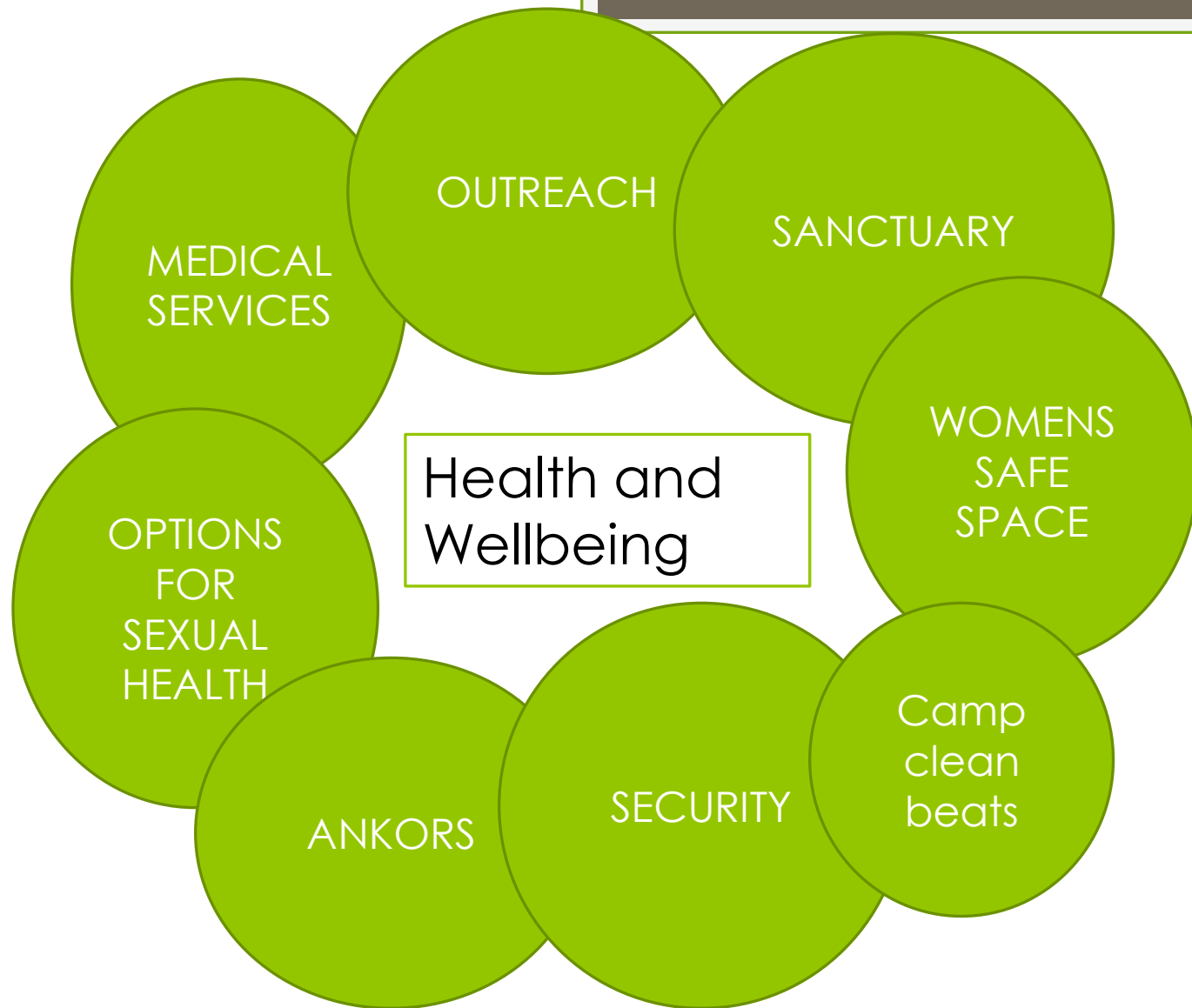
Location : Salmo BC Canada(pop. 1139)

5 days 67,000 cumulative attendees
over 7 days, with a peak daily
attendance of 15,380. This is
Shambhala



Demographics







Outreach and Sanctuary



Wrap Around Harm Reduction

ANKORS

ShelterLogic

↑ SHAME
↑ RISK
NO Judgment
only Love

Eat
Sleep
=

SNORT
SAFER
PREVENT HEP C!
STRAWS
AT
ANKORS

DRUG QUESTIONS?
GO INTO HARM
REDUCTION
TENT

Choose
the
FESTIVAL
SYSTEM,
BUDDY!

HEP C
HAPPENS...
PREVENT
IT!!!
ASK HOW AT
THE ANKORS
BOOTH

FREE
DRUG
CHECKING
HERE

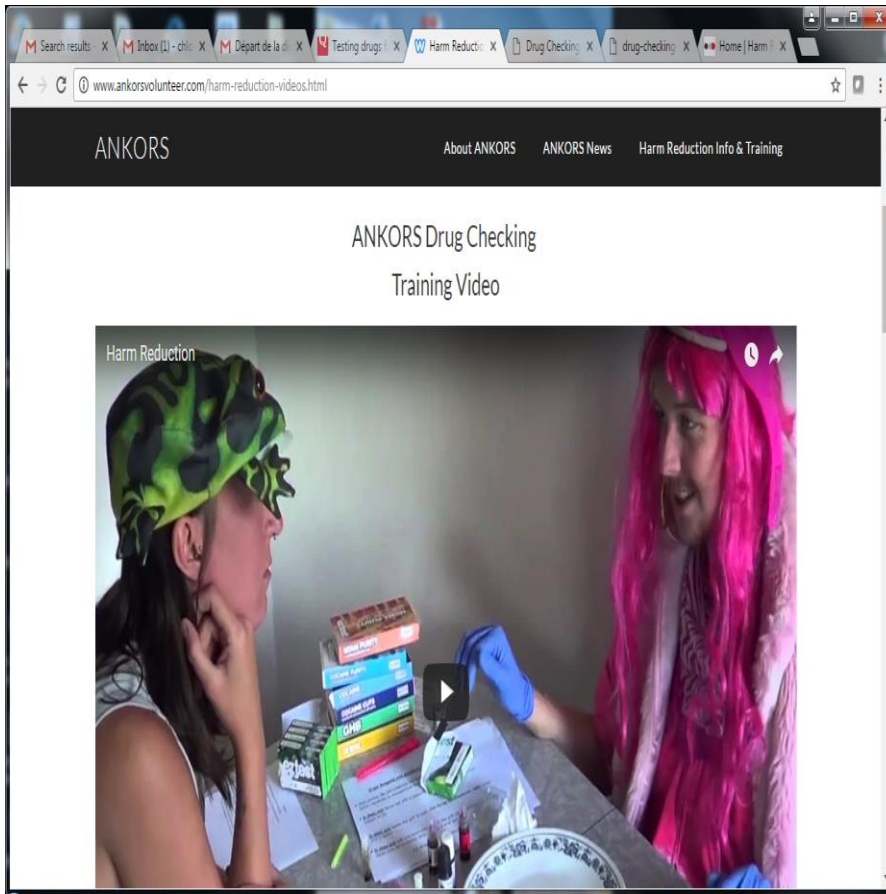
ALot of THIS
+
A little of THAT
=
ALot

ANKORS

ANKORS team



www.ankorsvolunteer.com



At Shambhala ANKORS offers Education, BBI Services, Sexual Health info and supplies, Drug Information



BC Opioid Crisis



Fentanyl can be from 50 to 100 times stronger than Morphine

It takes an **EXTREMELY** low dose of Fentanyl for a lethal effect

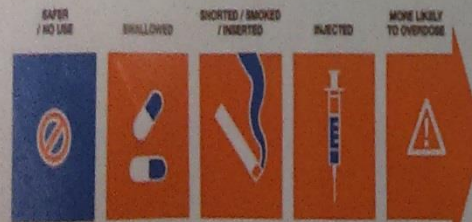
If your drugs were mixed on the same scale or table as fentanyl you could be at risk (cross-contamination)

Fentanyl is being mixed in with other drugs like: cocaine, amphetamines (speed), MDMA, oxycontin, heroin, other powder substances or sometimes it is sold as these drugs

Fentanyl doesn't have uniform concentration - every dose could be a different strength

There are many types of illicit fentanyl with varying strengths

CHOOSE A SAFER ROUTE



Opioid Overdose Signs & Symptoms

Don't use alone

Breathing will be slow or absent



Lips and nails are blue



Person is not moving



Person may be choking



You can hear gurgling sounds or snoring



Can't be woken up



Skin feels cold and clammy



Pupils are tiny



toward
the heart.com

CALL 9-1-1 IMMEDIATELY

Adapted from materials developed by ONCC

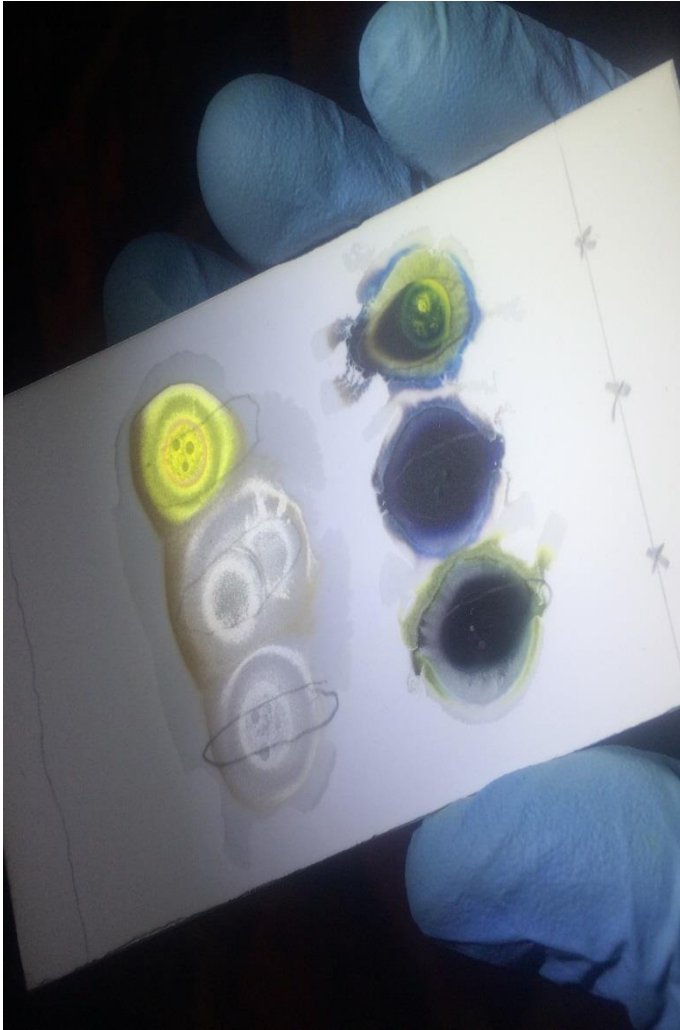
ANKORS

1-800-421-2437 (250-505-5506) for more information,
& for access to naloxone overdose reversal training

ANKORS



Drug Checking technologies



Lots of Cocaine tests cut w/ Levamisole
 ↓ downgrading agent
 ↓ long-term use & negative effects
 Cocaine cut w/ ephedrine
 Methamphetamine
 SPONGE BAG BUTTER - SUD AS KIDZ IDNT KNOW NAME
 Sold as Ketamine in yellow red bag
 Sold as cocaine in clear bag
 Sold as cocaine in clear bag
 Sold as cocaine in clear bag
 Pink Monkey pill
 Red Basket Ball Bag sold as Ketamine
 ↓ Unknown!!
 COCAINE (WHT POWDER) MOSTLY
 100% BENZOCAINE
 100% EPHEDRINE

ink Monkey
Red Basket Ball Ball bag
→ Unknown!!

SOLD As COCAINE (WHT POWDER) MOSTLY
BEING COCAINE
+ EPHEDRINE

White Strip Blotter - sold as LSD -
tests Not LSD - Bad trip report +

Red snake press tabs - sold as MDMA - Not MDMA!

Grainy square tabs - sold as m → inconclusive test.

Brown powder sold as m → inconclusive test.

Small yellow gel cap sold as MDMA

Small yellow gel cap inside
- black powder - sold as 14+ hour high,
strong hallucinations
- contains TMA-6 - making people extremely aggressive

Bad Acid!! - making people
Brazz blotter.

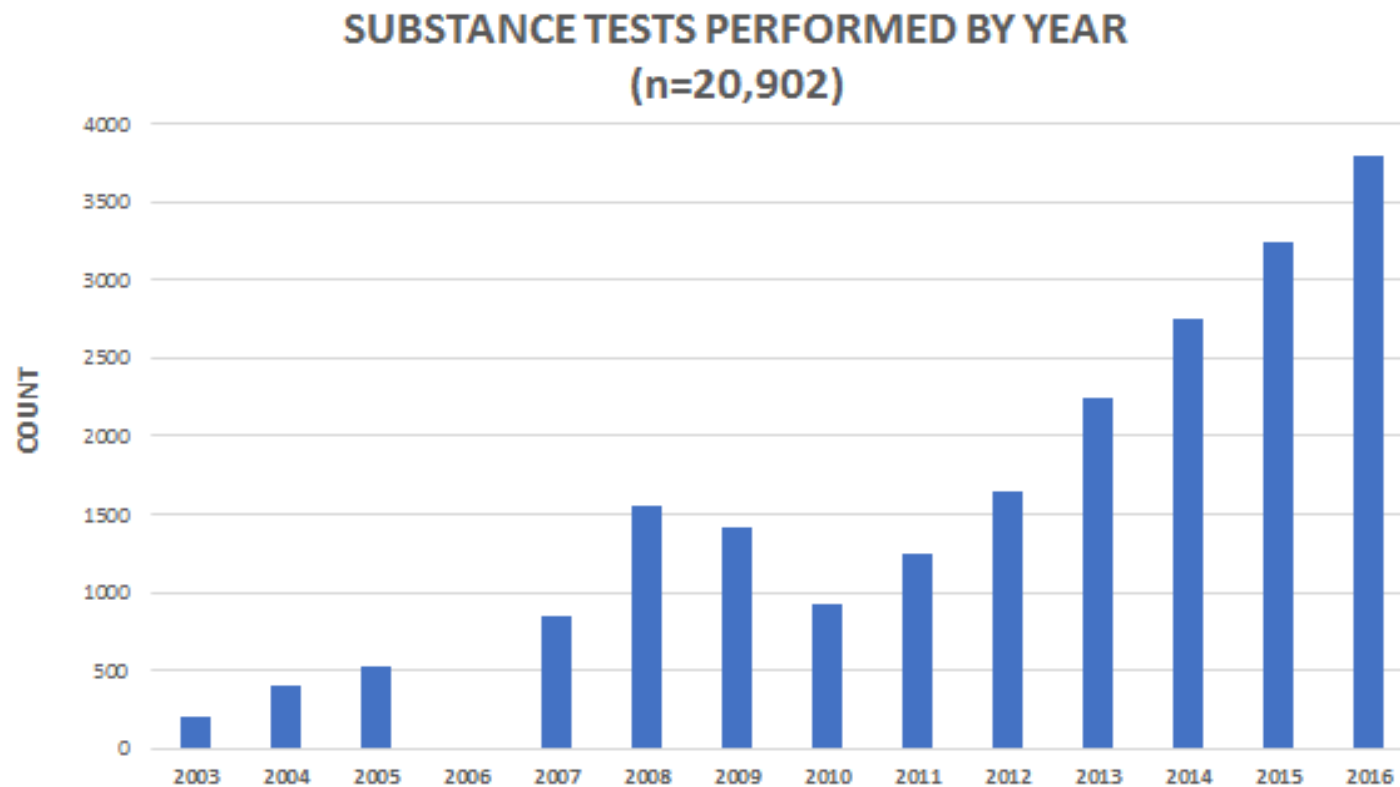
Small miniz - test is inconclusive
- sold as coke - 5 miniz
- some making people

[illegible][illegible]

Data from 2016 Festival

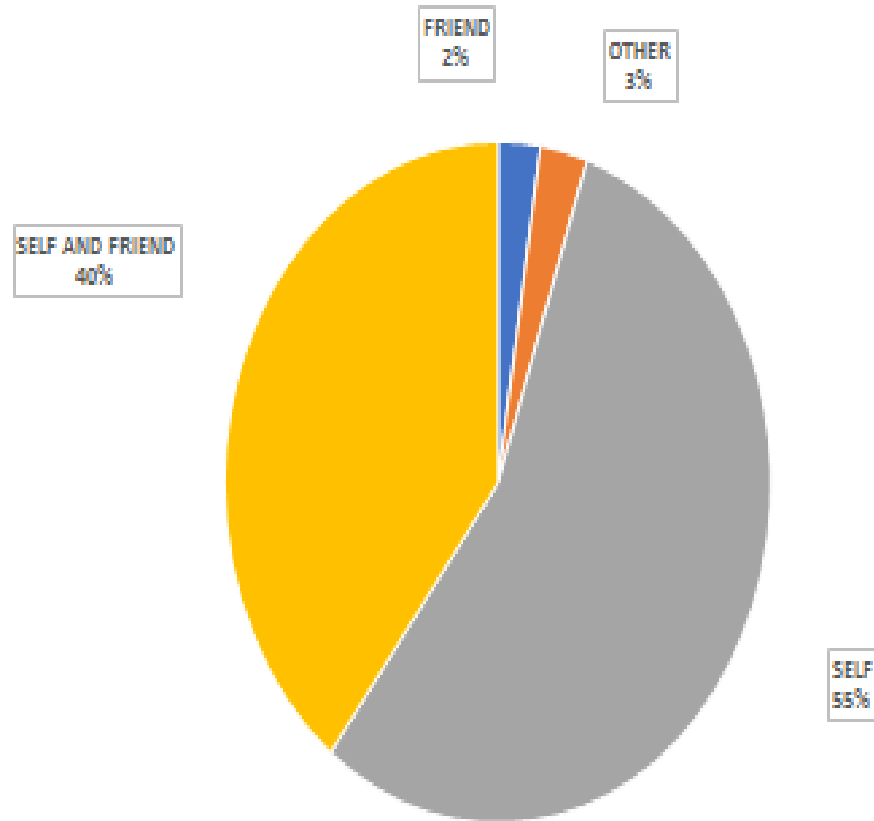


Number of tests over time

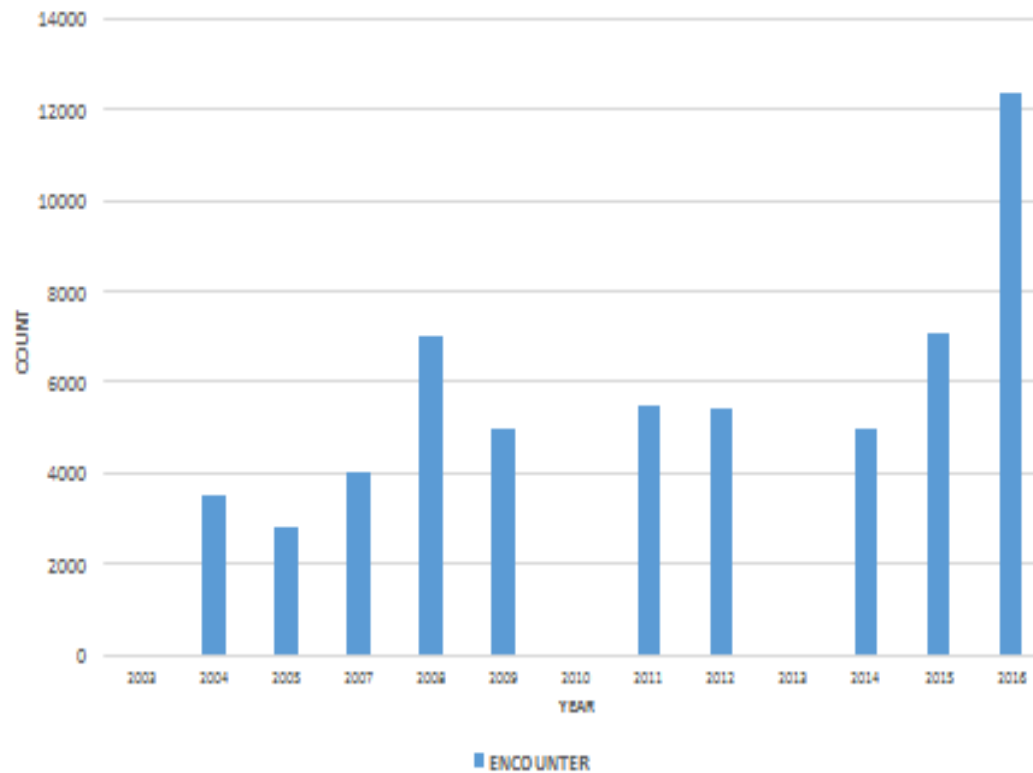


INTENTION FOR SUBSTANCES 2016

n= 3560



NUMBER OF ENCOUNTERS BY YEAR

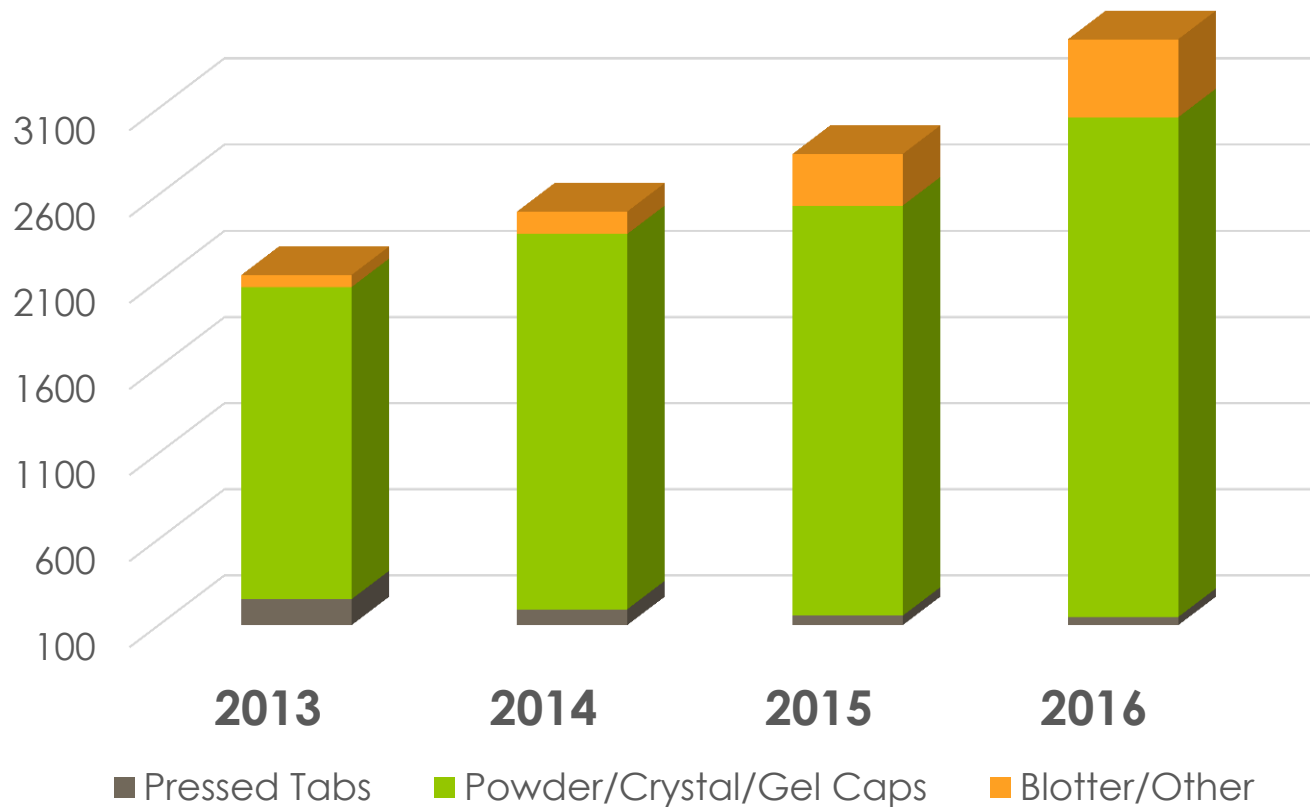


Patient Encounters

	2012	2013	2014	2015
Peak Attendance	-	-	15,380	14,796
Cumulative Attendance	-	-	67,120	60,820
Total Patient Encounters	-	-	1,393	1,316
Ambulance Transfers	17 (28)	12 (19)	13	5
Patient Presentation Rate (PPR)	-	-	20.7	21.6
Ambulance Transfer Rate (ATR)	-	-	0.194	0.082
Percentage of Patients Transported by Ambulance (PPTA)	-	-	0.93	0.38

Brendan Munn Medical Director Shambhala
Music festival

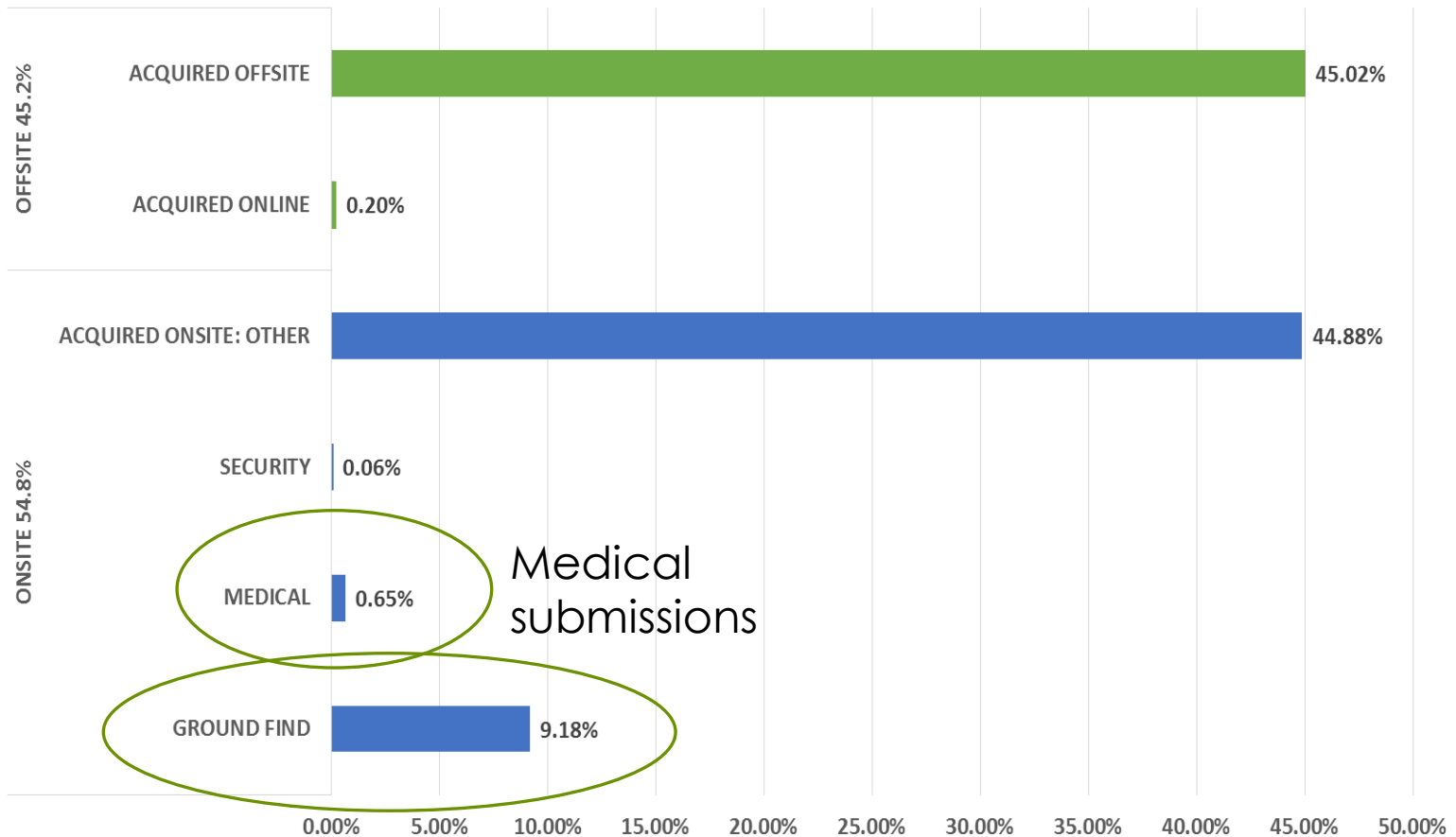
PHYSICAL FORMS OF SUBSTANCES



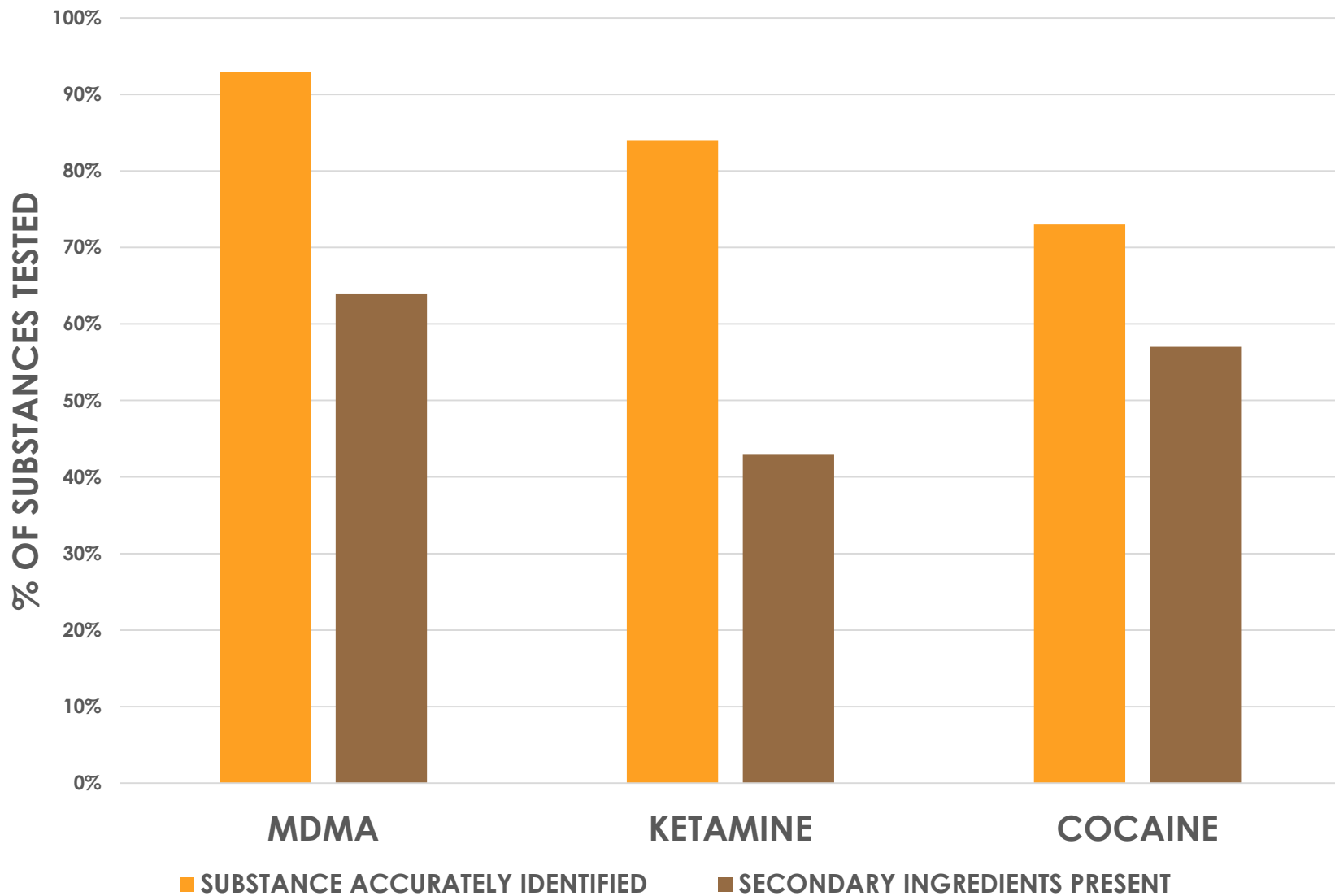
MDMA samples tested



SUBSTANCE PROCUREMENT

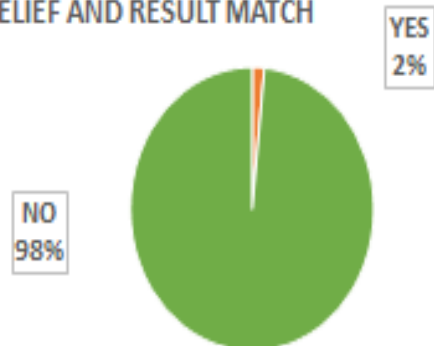


2016 n=3560



SUBSTANCE DISCARDED BASED ON RESULT

BELIEF AND RESULT MATCH



BELIEF AND RESULT DO NOT MATCH



BELIEF IDENTIFIED, ACTUAL UNKNOWN



BOTH BELIEF AND RESULT ARE UNKNOWN





Want to support us in our
efforts to get an improved
testing machine??

www.gofundme.com/ANKORSSAVESLIVES

FENTANYL

By Chloe Sage

hrankors@gmail.com

www.ankorsvolunteer.com

- Special thanks to Interior Health for their support with data analysis
- Selkirk College students Shari Starling and Geanine Gerrow
- Shambhala Music Festival
- All the ANKORS team at Shambhala for making it happen
- Alex Sherstobitoff for starting the drug checking program at ANKORS